

PICKENS COUNTY

PUBLIC SERVICE COMMISSION	FY 2006 ACTUAL	FY 2007 ACTUAL	FY 2008 BUDGET	FY 2008 ESTIMATED	FY 2009 BUDGET
OPERATING REVENUES					
Charges for Service	\$ 1,248,421	\$ 1,111,067	\$ 1,116,716	\$ 1,116,716	\$ 1,159,123
Intergovernmental	10,672	-	-	-	-
	<u>1,259,093</u>	<u>1,111,067</u>	<u>1,116,716</u>	<u>1,116,716</u>	<u>1,159,123</u>
OPERATING EXPENSES					
Personnel Services	429,607	430,049	429,191	429,191	404,485
Operating Expenses	631,140	581,921	603,903	603,903	700,183
	<u>1,060,747</u>	<u>1,011,970</u>	<u>1,033,094</u>	<u>1,033,094</u>	<u>1,104,668</u>
OPERATING (LOSS) INCOME	<u>198,346</u>	<u>99,097</u>	<u>83,622</u>	<u>83,622</u>	<u>54,455</u>
NON-OPERATING REVENUES (EXPENSES)					
Reserve for Debt Service	-	-	(110,144)	(110,144)	(110,144)
Debt Service - Principal	(113,745)	(116,840)	(120,084)	(120,084)	(94,320)
Debt Service - Interest	(251,759)	(248,664)	(245,420)	(245,420)	(242,017)
Transfers In	532,425	711,537	392,026	392,026	392,026
	<u>166,921</u>	<u>346,033</u>	<u>(83,622)</u>	<u>(83,622)</u>	<u>(54,455)</u>
NET INCOME (LOSS) - BUDGETARY BASIS	<u>\$ 365,267</u>	<u>\$ 445,130</u>	<u>\$ -</u>	<u>\$ -</u>	<u>\$ -</u>
ADJUSTMENT TO GAAP BASIS					
INCREASES (DECREASES)					
Depreciation	(774,078)	(781,159)			
Capital	10,245	710,863			
Repayment of loan	113,745	116,840			
CHANGE IN NET ASSETS GAAP BASIS	<u>\$ (284,821)</u>	<u>\$ 491,674</u>			
Beginning Fund Equity:	<u>\$ 20,024,553</u>	<u>\$ 19,739,732</u>			
Fund Equity, June 30	<u>\$ 19,739,732</u>	<u>\$ 20,231,406</u>			

PUBLIC SERVICE COMMISSION

MISSION

The mission of the Public Service Commission is to protect human health and the environment through the proper treatment of wastewater discharges to surface waters of Pickens County.

GOALS

- Reduce NPDES violations at PSC wastewater facilities
- Maintain a safe working environment
- Complete Roper upgrade and Cateechee WWTP upgrade
- Implement System Maintenance Program (pending position approval)
- Develop Construction Standards and Procedures (pending position approval)
- Construct sewer line along SC 93 from ECP, Inc. to SeaLevel, Inc.
- Decommission LEC pump station and replace with gravity sewer

PRIOR YEAR ACCOMPLISHMENTS

- Staff restructuring (and net salary reduction) to make room for System Maintenance Manager position
- Closure of Cramer WWTP
- Design and start of construction: Roper upgrade and Cateechee upgrade
- NPDES Permit renewals for WWTPs
- Reduction in NPDES violations

BUDGET HIGHLIGHTS

There are no significant changes in the FY 2009 budget.

WORKLOAD INDICATOR

	FY 2004 ACTUAL	FY 2005 ACTUAL	FY 2006 ACTUAL	FY 2007 ACTUAL
Wastewater treated (gals)	342,555,281	306,732,858	285,072,185	314,848,532
Routine Operator visits to WWTPs	3,500	3,540	4,000	4,000
Preventive maintenance, chemical deliveries, repairs	1,825	1,825	1,825	1,825
Lab Tests conducted	14,000	14,000	14,110	14,110
Gals Biosolids Land Applied	951,600	1,063,830	1,146,000	729,500
PTP Industrial User Reports	72	96	100	100
Newsletters distributed	10,000	10,000	10,000	0

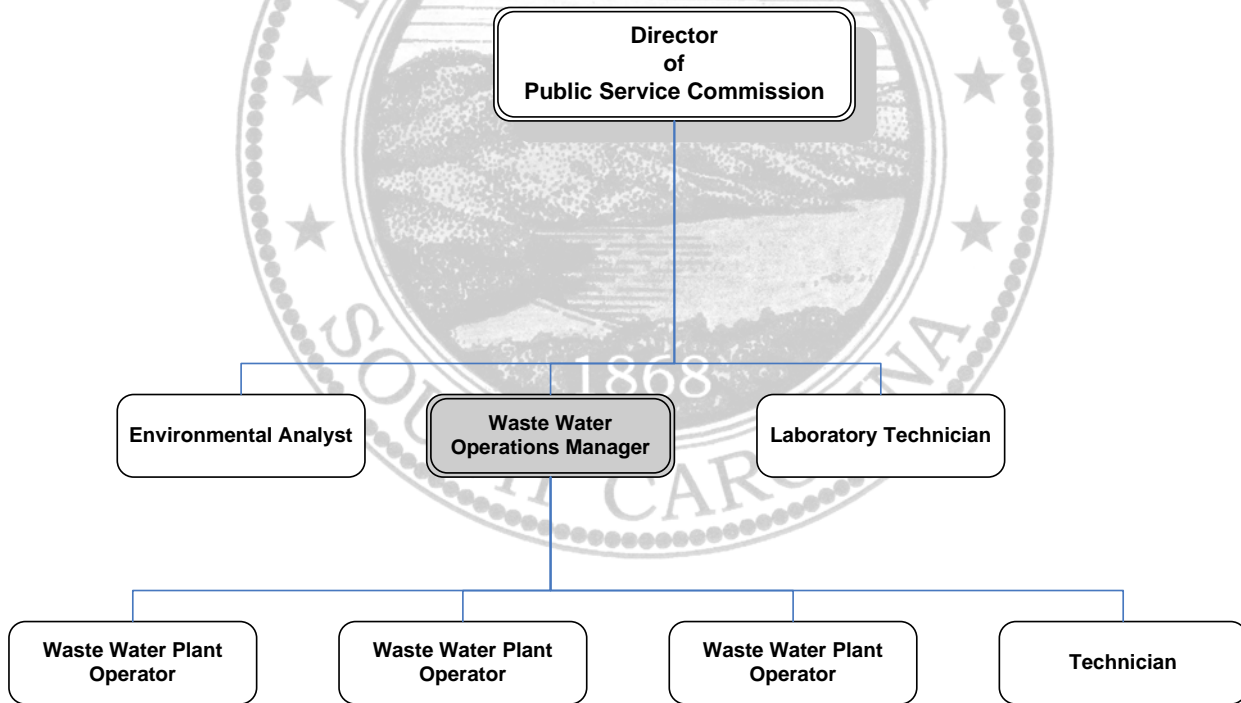
PTP - Pretreatment Program
 WWTP - Wastewater Treatment Plant

PICKENS COUNTY

PUBLIC SERVICE COMMISSION

DEPARTMENT SUMMARY

	FY 2006 ACTUAL	FY 2007 ACTUAL	FY 2008 BUDGET	FY 2009 BUDGET
Personnel Services	\$ 429,607	\$ 430,049	\$ 429,191	\$ 404,485
Supplies & Materials	243,922	250,718	242,522	318,011
Contractual Services	387,286	331,203	361,381	382,172
Other	774,078	781,159	-	-
Debt Service	251,759	248,664	365,504	336,337
Capital	-	-	-	-
Total	\$2,086,652	\$2,041,794	\$1,398,598	\$1,441,005
Total Positions	9	9	8	8



PICKENS COUNTY

AIRPORT	FY 2006 ACTUAL	FY 2007 ACTUAL	FY 2008 BUDGET	FY 2008 ESTIMATED	FY 2009 BUDGET
OPERATING REVENUES					
Charges for Service	\$ 253,965	\$ 287,119	\$ 364,080	\$ 364,080	\$ 523,745
Intergovernmental	100,650	-	818,813	818,813	-
	<u>354,615</u>	<u>287,119</u>	<u>1,182,893</u>	<u>1,182,893</u>	<u>523,745</u>
OPERATING EXPENSES					
Personnel Services	90,533	88,438	102,118	102,118	97,542
Operating Expenses	304,654	328,403	327,050	327,050	401,672
	<u>395,187</u>	<u>416,841</u>	<u>429,168</u>	<u>429,168</u>	<u>499,214</u>
OPERATING (LOSS) INCOME	<u>(40,572)</u>	<u>(129,722)</u>	<u>753,725</u>	<u>753,725</u>	<u>24,531</u>
NON-OPERATING REVENUES (EXPENSES)					
Debt Service - Principal	-	-	(32,400)	(32,400)	(113,850)
Capital	-	-	(1,203,376)	(1,203,376)	(8,169)
Transfer from General Fund	167,502	160,552	482,051	482,051	97,488
	<u>167,502</u>	<u>160,552</u>	<u>(753,725)</u>	<u>(753,725)</u>	<u>(24,531)</u>
NET INCOME (LOSS) - BUDGETARY BASIS	<u>\$ 126,930</u>	<u>\$ 30,830</u>	<u>\$ -</u>	<u>\$ -</u>	<u>\$ -</u>
ADJUSTMENT TO GAAP BASIS INCREASES (DECREASES)					
Depreciation	\$ (193,000)	\$ (296,371)			
Capital	-	-			
Prior Period Adjustment	-	(18,969)			
CHANGE IN NET ASSETS GAAP BASIS	<u>\$ (66,070)</u>	<u>\$ (284,510)</u>			
Beginning Fund Equity:	<u>\$ 3,808,264</u>	<u>\$ 3,742,194</u>			
Fund Equity, June 30	<u>\$ 3,742,194</u>	<u>\$ 3,457,684</u>			

AIRPORT

MISSION

The mission of the Airport is to provide an aviation gateway to the foothills, provide maintenance and support for locally based and transient aircraft, operate and maintain the airport safely to comply with county, state and federal regulations, promote and market the use of air transportation in the county.

GOALS

- Strengthen airport image and integrate its role within community
- Support enhancement of economic development for county
- Develop programs, policies and procedures in order to enhance financial growth of airport
- Stimulate private and public interest and investment in revitalization and expansion of facilities and services

PRIOR YEAR ACCOMPLISHMENTS

No accomplishments were submitted.

BUDGET HIGHLIGHTS

- Money was approved to construct a new terminal.

DEPARTMENT SUMMARY

	FY 2006 ACTUAL	FY 2007 ACTUAL	FY 2008 BUDGET	FY 2009 BUDGET
Personnel Services	\$ 90,533	\$ 88,438	\$ 102,118	\$ 97,542
Supplies & Materials	227,746	190,340	267,880	340,480
Contractual Services	76,908	66,090	59,170	58,729
Other	193,000	368,343	-	2,463
Debt Service	-	-	32,400	113,850
Capital	-	-	1,203,376	8,169
Total	\$ 588,187	\$ 713,211	\$1,664,944	\$ 618,770
Total Positions	3	4	4	4

